

## CCL50i Volumetric pumps

Something new in the Food transport world

The new pump CCL50i has been designed to answer the especially tough constraints of this application.

### Easy assembly

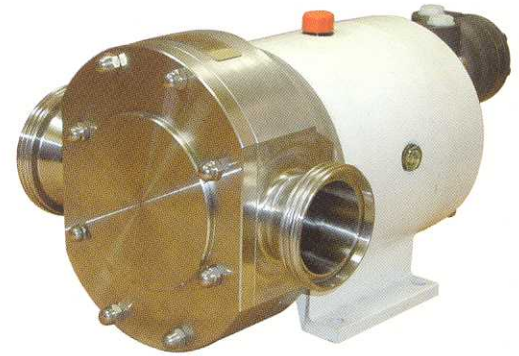
- Particularly compact, it can be installed with horizontal or vertical ports.
- Hollow shaft allowing the direct assembly of the hydraulic engine.
- Lightweight due to the aluminium gear box.
- Reversibility leaving the free choice of the inlet and the outlet ports.
- Connections by interface DIN 11851 DN 80 and DN 100 which can be switched around.

### Flexibility of exploitation

- Adapted to any types of foodstuffs: from the fluidest (Alcohol) to the most viscous (Glucose syrups).
- Reversibility allowing to drain away the customer line at the end of the unloading.
- Ease of cleaning both by CIP (cleaning in place) and manually.
- Simplicity, robustness due to the use of bi lobe rotors.
- Very silent, it will respect the neighbourhood.
- Triple lip seal shaft seals without any maintenance.

### Respect for the transferred product

- All the wet components are in stainless steel 316L.
- Compliant to standard 3A.
- FDA approved O-Ring.
- Bi lobes rotors insure a gentle transfer, heating free.



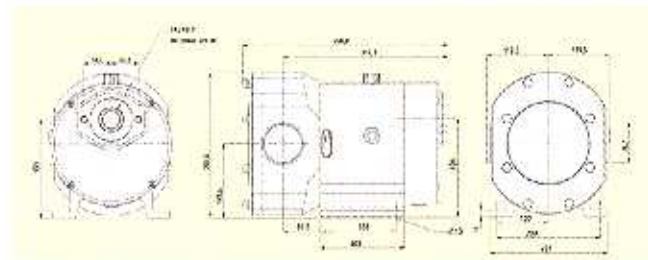
**Up to 65 m<sup>3</sup>/h  
1 000 rpm**



# CCL50i Volumetric pumps Something new in the Food transport world

## Limits of use :

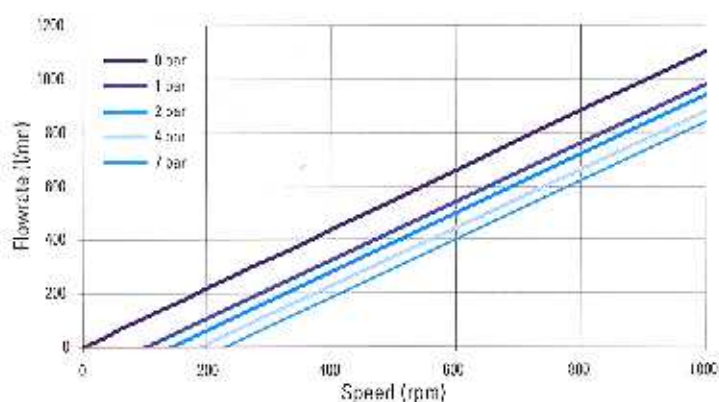
Flowrate	65 m <sup>3</sup> /h
Speed	1 000 rpm
Pressure	7 bar
Temperature	110°C



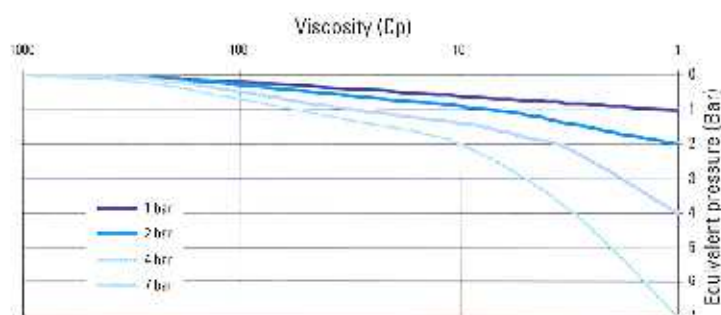
## Features :

Materials	Wetted components in SS 316L
	EPDM O-ring type FDA
	PTFE shaft seal
Equipment	Triple lip seal shaft seals
	Connections Din 11851 DN 100 at the inlet and DN 80 at the outlet which can be switched around
	Bi lobe rotors
	Hollow shaft for hydraulic engine SAE internal splined
Rotation direction	Reversible
Assembly	Horizontal or vertical
Norms	Compliant to 3A standard
Noise level	75 DBA at 1 meter
Weight	70 Kg oil included

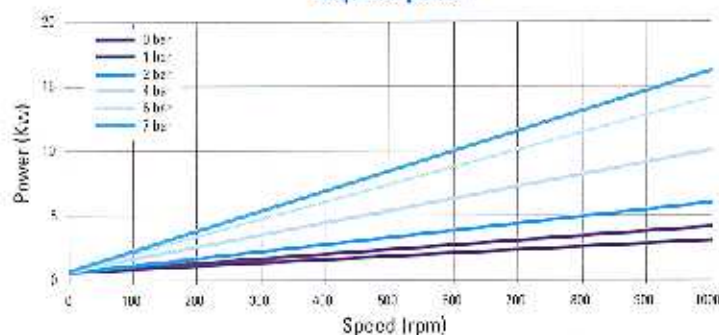
Flowrate at viscosity of 1 Cp



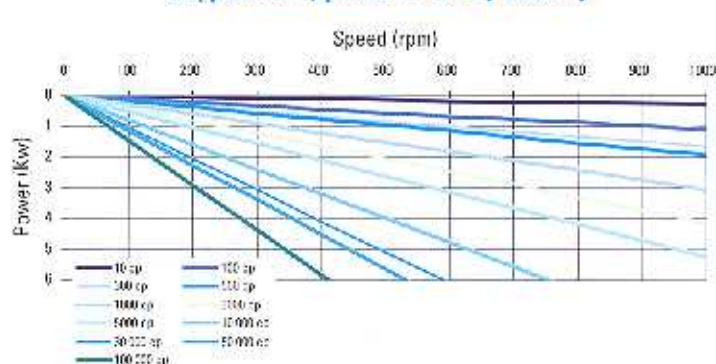
Equivalent pressure calculation (to be transferred to the left diagram) in function of the working pressure and viscosity



Required power



Supplementary power needed by viscosity



Distributed by :



### World Headquarters

1809 Century Avenue SW  
Grand Rapids, MI 49503-1530 USA  
T 616.241.1611 F 616.241.3752

### European Headquarters

ZI la Plaine des Iles, rue des Collattes, 89000  
Avallon, FRANCE  
T +33.3.86.49.86.20 F +33.3.86.46.42.10

