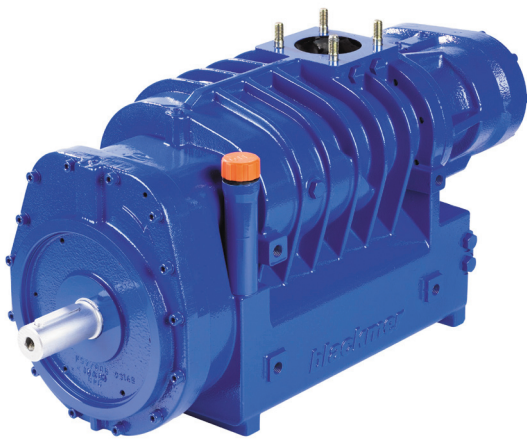




Screw compressor B 1500

SP/Pression and Pressure


The Unique - 625 up to 1550 m³/h -



B1500 - 20 R

1000 - 2000 rpm CW 

B1500 - 30 R

1500 - 3000 rpm CW 

Dimensions (mm) :



L 743 x H 362 x W 280

Weight :

159 kg

**The solution for an optimum mounting
inside truck frame.**

B1500-19R/22L

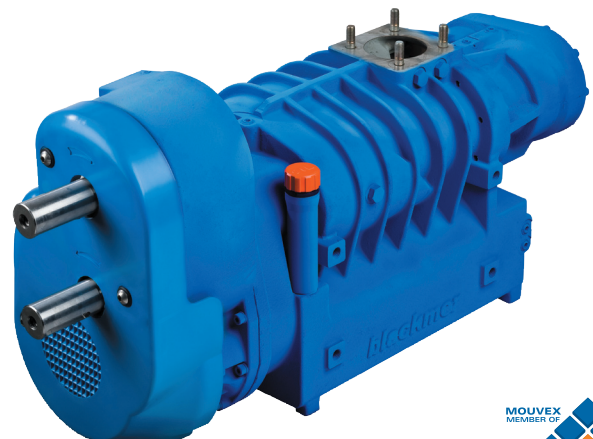
either 975 - 1950 rpm CW 
or 1125 - 2250 rpm CCW 

Dimensions (mm) :

L 880 x H 446 x W 295

Weight :

189 kg





Screw compressor B 1500 SP

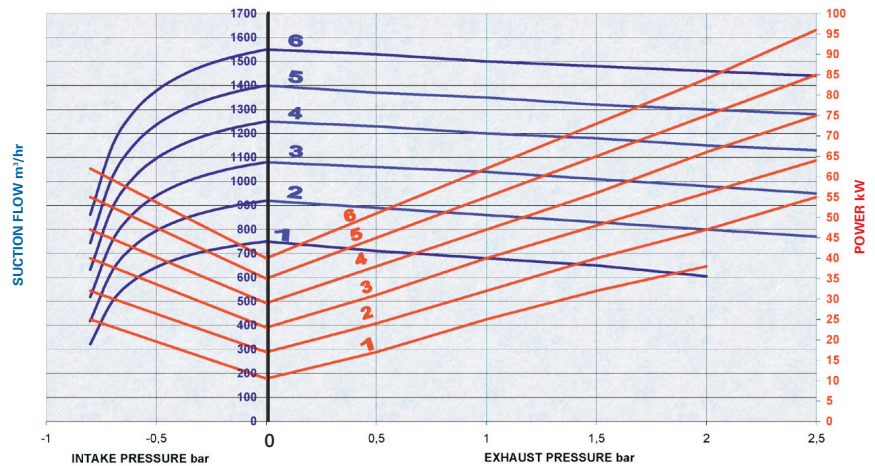
Speed (rpm)

COMPRESSOR SPEED

VERSION	1	2	3	4	5	6
19R	975	1170	1365	1560	1755	1950
20R	1000	1200	1400	1600	1800	2000
22L	1125	1320	1580	1800	2035	2250
30R	1500	1800	2100	2400	2700	3000

Flow (m³/hr) / Power (kW)

Suction atm, 20°C



Torque / Pressure (Nm)

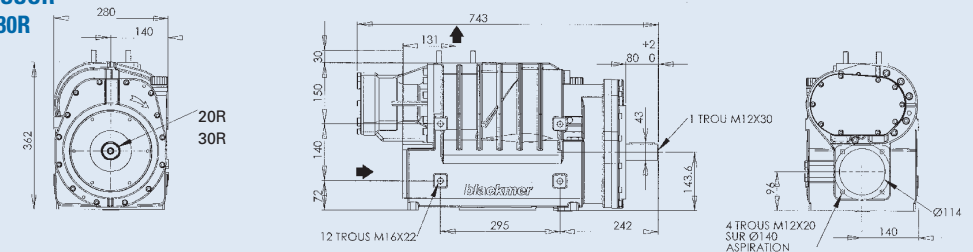
VERSION	PRESSURE (bar)*		
	1.5	2.0	2.5
19R	370	420	480
20R	350	400	460
22L	320	360	420
30R	230	270	310

*At full speed

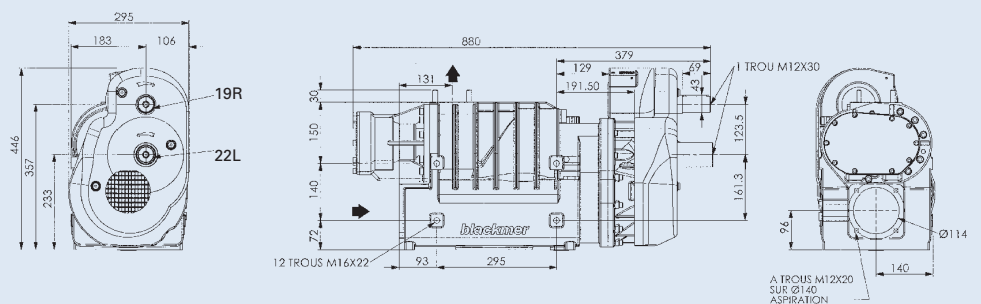
Torque /Suction (Nm)

VERSION	Suction -800 mbar
19R	312
20R	296
22L	269
30R	187

B 1500 COMPRESSOR 20R and 30R



B 1500 COMPRESSOR WITH MULTIPLIER 19R/22L



Mouvex reserves the right to modify the information and illustrations contained in this document without prior notice. This is a non-contractual document.
Printed in FRANCE by Filigrane
© 2009 Mouvex

ZI la Plaine des Isles
rue des Caillottes
89000 AUXERRE - FRANCE
T + 33.3.86.49.86.30
F + 33.3.86.46.42.10
contact@mouvex.com

www.mouvex.com



Distributed by :